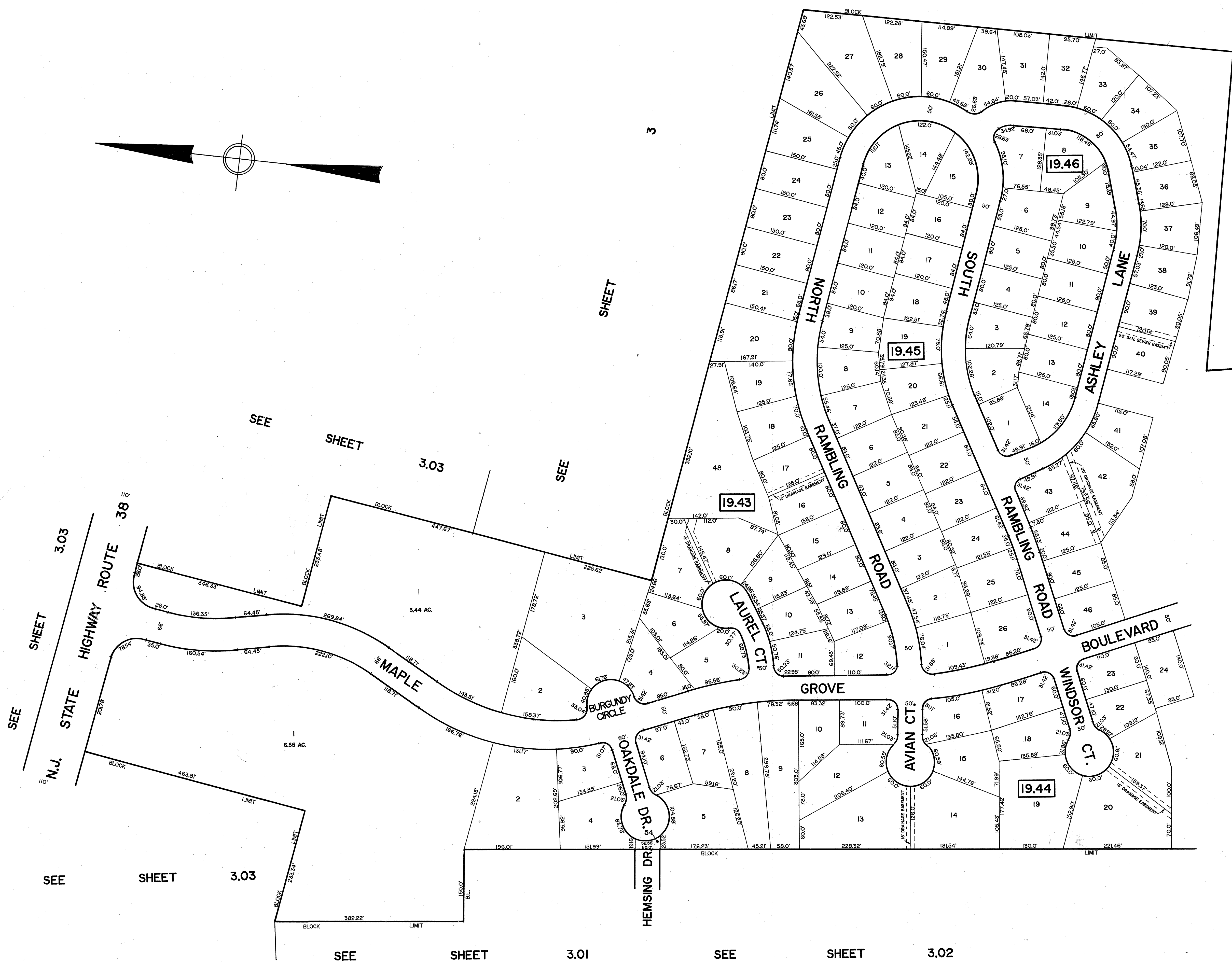


SEE SHEET 3



SEE SHEET 3.06

SUNNYBROOK DR.

SEE SHEET 3.09

TAX MAP
 LUMBERTON TOWNSHIP
 BURLINGTON COUNTY, NEW JERSEY
 SCALE: 1"=100' APRIL 14, 1989
 T. RONALD GSELL, P.E. & P.L.S.

200 HIGH STREET, MOUNT HOLLY, N.J.