

SEE SHEET 3.10

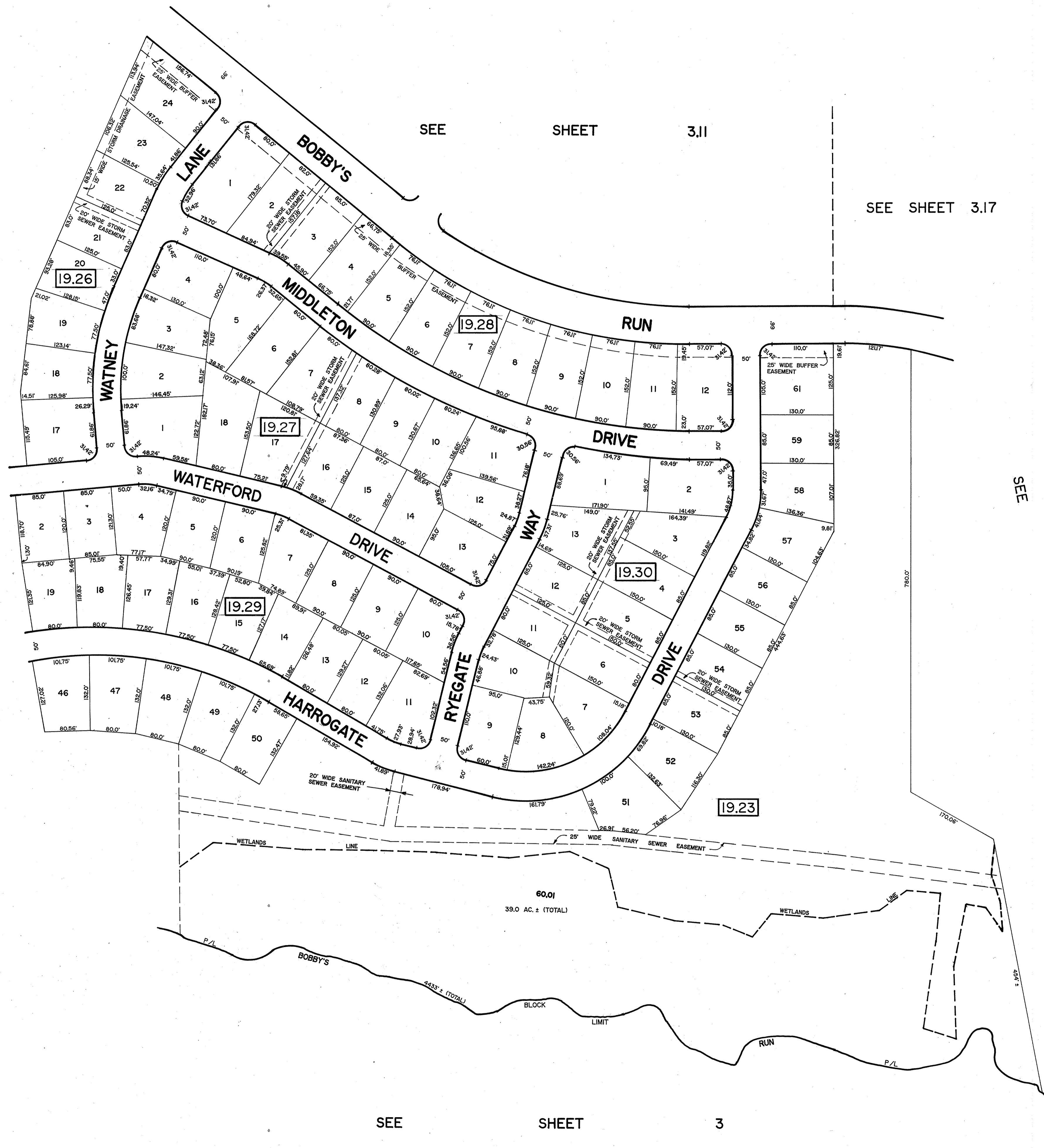
SEE SHEET 3.11

SEE SHEET 3.17

SEE

SHEET

3.14



SEE SHEET 3

TAX MAP
LUMBERTON TOWNSHIP
 BURLINGTON COUNTY, NEW JERSEY
 SCALE : 1" = 100' DECEMBER 5, 1994
 T. RONALD GSELL, P.E. & P.L.S.
 200 HIGH STREET, MOUNT HOLLY, N.J.