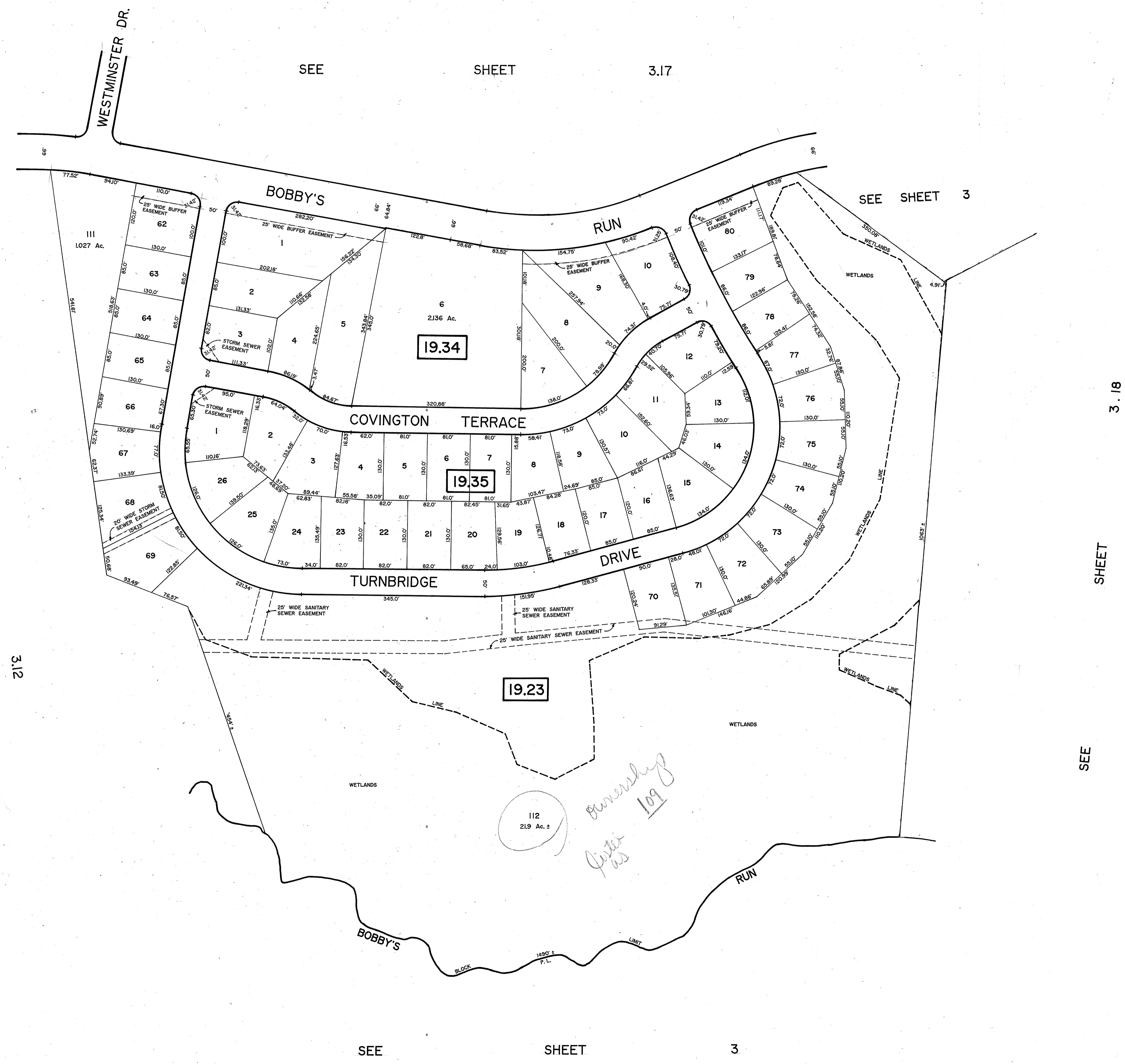


SEE SHEET 3.12



SEE SHEET 3.17

SEE SHEET 3

3.18

SHEET

SHEET

3.12

SEE

SEE SHEET

SHEET

3

TAX MAP
LUMBERTON TOWNSHIP
 BURLINGTON COUNTY, NEW JERSEY
 SCALE: 1" = 100' SEPTEMBER 12, 1995
 T. RONALD GSELL, P.E. & P.L.S.
 200 HIGH STREET, MOUNT HOLLY, N.J.

*Ownership
 Peter
 109*