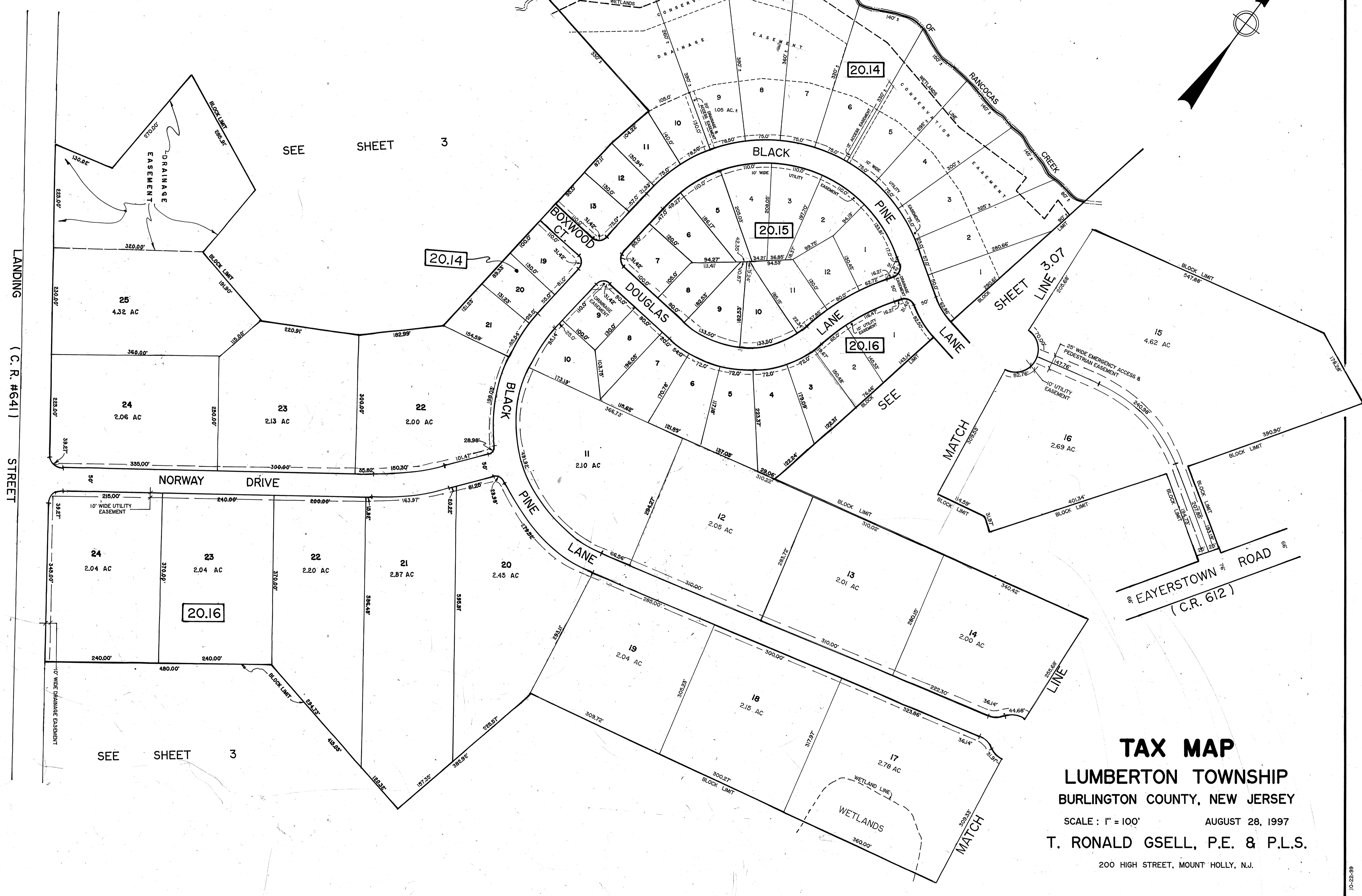
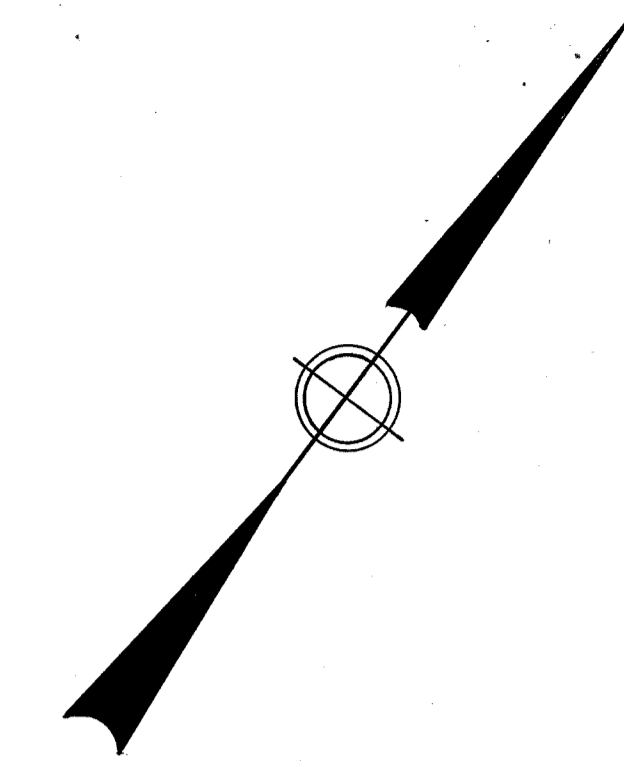


SEE PLATE 3.15



TAX MAP
LUMBERTON TOWNSHIP
 BURLINGTON COUNTY, NEW JERSEY
 SCALE: 1" = 100' AUGUST 28, 1997
 T. RONALD GSELL, P.E. & P.L.S.
 200 HIGH STREET, MOUNT HOLLY, N.J.