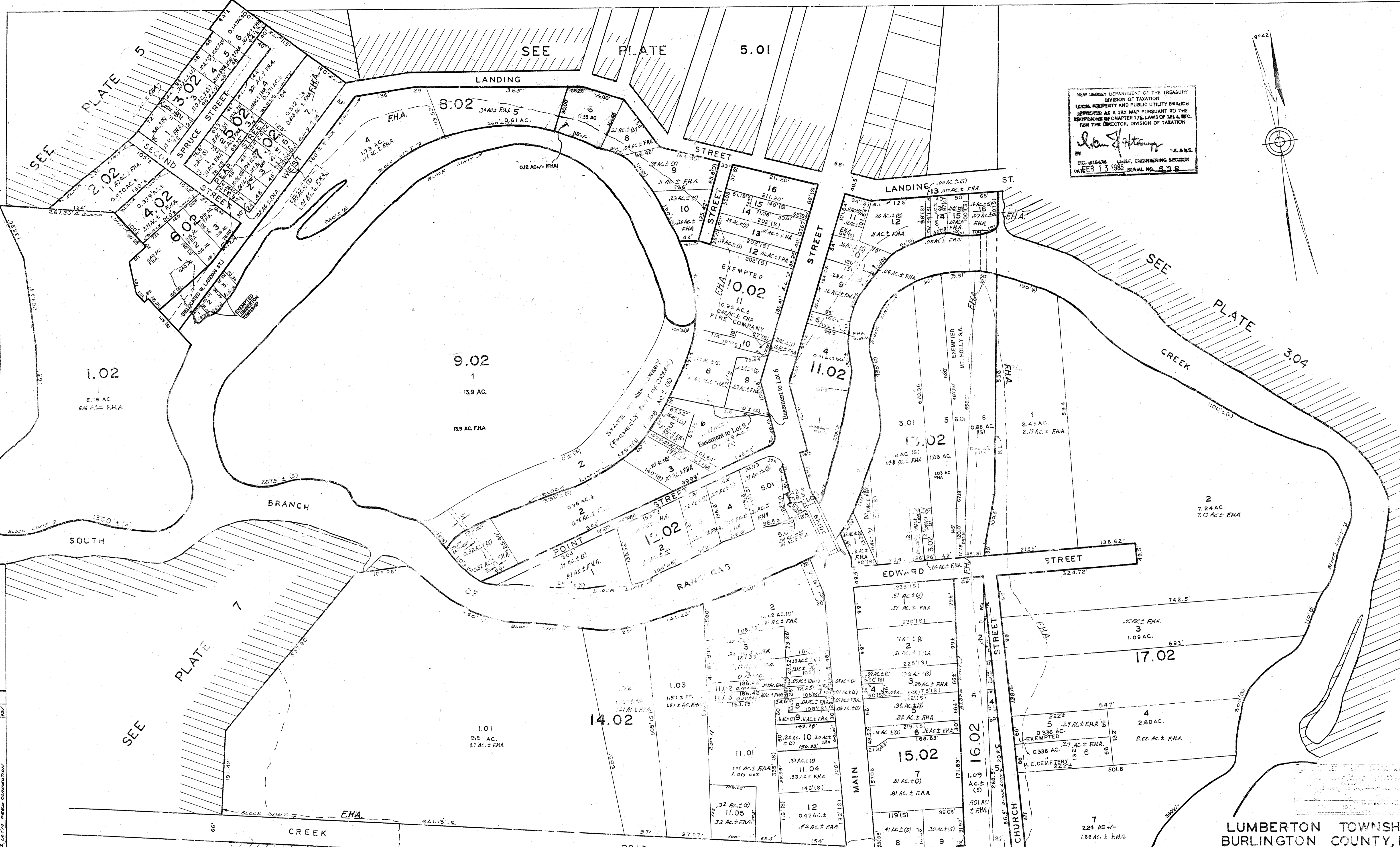
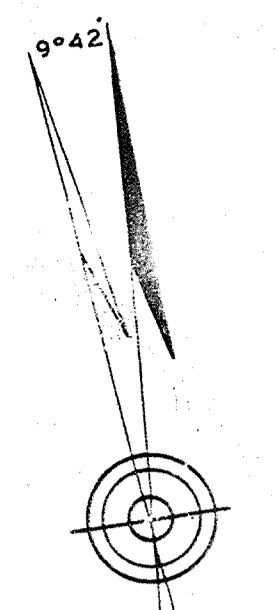


NEW JERSEY DEPARTMENT OF THE TREASURY
 DIVISION OF TAXATION
 LOCAL PROPERTY AND PUBLIC UTILITY TAX MAPS
 PREPARED AS A TAX MAP PURSUANT TO THE
 PROVISIONS OF CHAPTER 125, LAWS OF 1981, ETC.
 FOR THE DIRECTOR, DIVISION OF TAXATION

John J. Harty
 LIC. #16436 CHIEF, ENGINEERING SECTION
 DATE FEB 13 1985 SERIAL NO. 838



LUMBERTON TOWNSHIP
 BURLINGTON COUNTY, N. J.
 PLOTTED FROM SURVEYS & RECORDS

BY
 A.C. JONES & W.M. GIBBS CIVIL ENGINEERS
 223 HIGH ST. MOUNT HOLLY, N.J.

SCALE 1" = 100'

FEB. 1, 1947
 REVISED SEPT. 29, 1950
 REVISED AUG. 25, 1952
 REVISED OCT. 19, 1955
 REVISED JULY 14, 1965
 REVISED DEC. 5, 1968
 REVISED DEC. 14, 1968

REVISIONS	DATE	REVISION MADE TO:	BY:
BLK 802 LOT 21 & 501 LOT LADDED EASEMENT 1003/1071	12-29-81	BLK 802 LOT 21 & 501 LOT LADDED EASEMENT 1003/1071	DFE
BLK 802 LOT 21 & 501 LOT LADDED EASEMENT 1003/1071	12-29-81	BLK 802 LOT 21 & 501 LOT LADDED EASEMENT 1003/1071	DFE
BLK 802 REVERSE LOT 1003 & 1071	12-29-81	BLK 802 REVERSE LOT 1003 & 1071	DFE
BLK 802 REVERSE LOT 1003 & 1071	12-29-81	BLK 802 REVERSE LOT 1003 & 1071	DFE
BLK 14-02, 14-03, 14-04, 14-05, 14-06, 14-07, 14-08, 14-09, 14-10, 14-11, 14-12, 14-13, 14-14, 14-15, 14-16, 14-17, 14-18, 14-19, 14-20, 14-21, 14-22, 14-23, 14-24, 14-25, 14-26, 14-27, 14-28, 14-29, 14-30, 14-31, 14-32, 14-33, 14-34, 14-35, 14-36, 14-37, 14-38, 14-39, 14-40, 14-41, 14-42, 14-43, 14-44, 14-45, 14-46, 14-47, 14-48, 14-49, 14-50, 14-51, 14-52, 14-53, 14-54, 14-55, 14-56, 14-57, 14-58, 14-59, 14-60, 14-61, 14-62, 14-63, 14-64, 14-65, 14-66, 14-67, 14-68, 14-69, 14-70, 14-71, 14-72, 14-73, 14-74, 14-75, 14-76, 14-77, 14-78, 14-79, 14-80, 14-81, 14-82, 14-83, 14-84, 14-85, 14-86, 14-87, 14-88, 14-89, 14-90, 14-91, 14-92, 14-93, 14-94, 14-95, 14-96, 14-97, 14-98, 14-99, 14-100	7-15-80	BLK 14-02, 14-03, 14-04, 14-05, 14-06, 14-07, 14-08, 14-09, 14-10, 14-11, 14-12, 14-13, 14-14, 14-15, 14-16, 14-17, 14-18, 14-19, 14-20, 14-21, 14-22, 14-23, 14-24, 14-25, 14-26, 14-27, 14-28, 14-29, 14-30, 14-31, 14-32, 14-33, 14-34, 14-35, 14-36, 14-37, 14-38, 14-39, 14-40, 14-41, 14-42, 14-43, 14-44, 14-45, 14-46, 14-47, 14-48, 14-49, 14-50, 14-51, 14-52, 14-53, 14-54, 14-55, 14-56, 14-57, 14-58, 14-59, 14-60, 14-61, 14-62, 14-63, 14-64, 14-65, 14-66, 14-67, 14-68, 14-69, 14-70, 14-71, 14-72, 14-73, 14-74, 14-75, 14-76, 14-77, 14-78, 14-79, 14-80, 14-81, 14-82, 14-83, 14-84, 14-85, 14-86, 14-87, 14-88, 14-89, 14-90, 14-91, 14-92, 14-93, 14-94, 14-95, 14-96, 14-97, 14-98, 14-99, 14-100	DFE

REVISIONS	DATE	REVISION MADE TO:	BY:
REVISED BY:	DATE	REVISION MADE TO:	BY:
R.A. ALAIMO ASSOC.	JUN 20 72	BLK 14-5 - ADDED LOT 71 D	DFE
R.A. ALAIMO ASSOC.	DEC 4 73	BLK 11-8 - REVISED LOT 462	DFE
R.A. ALAIMO ASSOC.	JAN 21 76	BLK 12-8 - ADDED LOTS 511, 512 - ADDED LOTS 12A, 12B	DFE
R.A. ALAIMO ASSOC.	JUN 7 76	BLK 10 - DELETED LOT 3	DFE
R.A. ALAIMO ASSOC.	JUL 13 77	BLK 14-5 - ADDED LOT 71 D	DFE
R.A. ALAIMO ASSOC.	MAY 31 81	BLK 10 - REVISED LOTS 7, 8, 9 (DEED 2571)	DFE
R.A. ALAIMO ASSOC.	DEC 15 83	BLK 10-8 - REVISED LOTS 7, 8, 9 (DEED 2571)	DFE
L.A.W. & B.	8-31-84	REVISE TO N.J. TAX MAP STANDARDS	DFE
L.A.W. & B.	1-2-85	REV. TO N.J. TAX MAP STANDARDS	DFE
L.A.W. & B.	6-1-85	REV. TO N.J. TAX MAP STANDARDS	DFE
L.A.W. & B.	5-31-85	ADDED FLOOD HAZARD AREAS	DFE
RICHARD A. ALAIMO ASSOC.	11-6-86	BLK 10-2 - CORRECTED LOTS 10, 11, 12, 13, 14, 15, 16, 17, 18, 19, 20, 21, 22, 23, 24, 25, 26, 27, 28, 29, 30, 31, 32, 33, 34, 35, 36, 37, 38, 39, 40, 41, 42, 43, 44, 45, 46, 47, 48, 49, 50, 51, 52, 53, 54, 55, 56, 57, 58, 59, 60, 61, 62, 63, 64, 65, 66, 67, 68, 69, 70, 71, 72, 73, 74, 75, 76, 77, 78, 79, 80, 81, 82, 83, 84, 85, 86, 87, 88, 89, 90, 91, 92, 93, 94, 95, 96, 97, 98, 99, 100	DFE
ERT	2-8-88	EXEMPT BLOCK 10.02, LOT 659	DFE