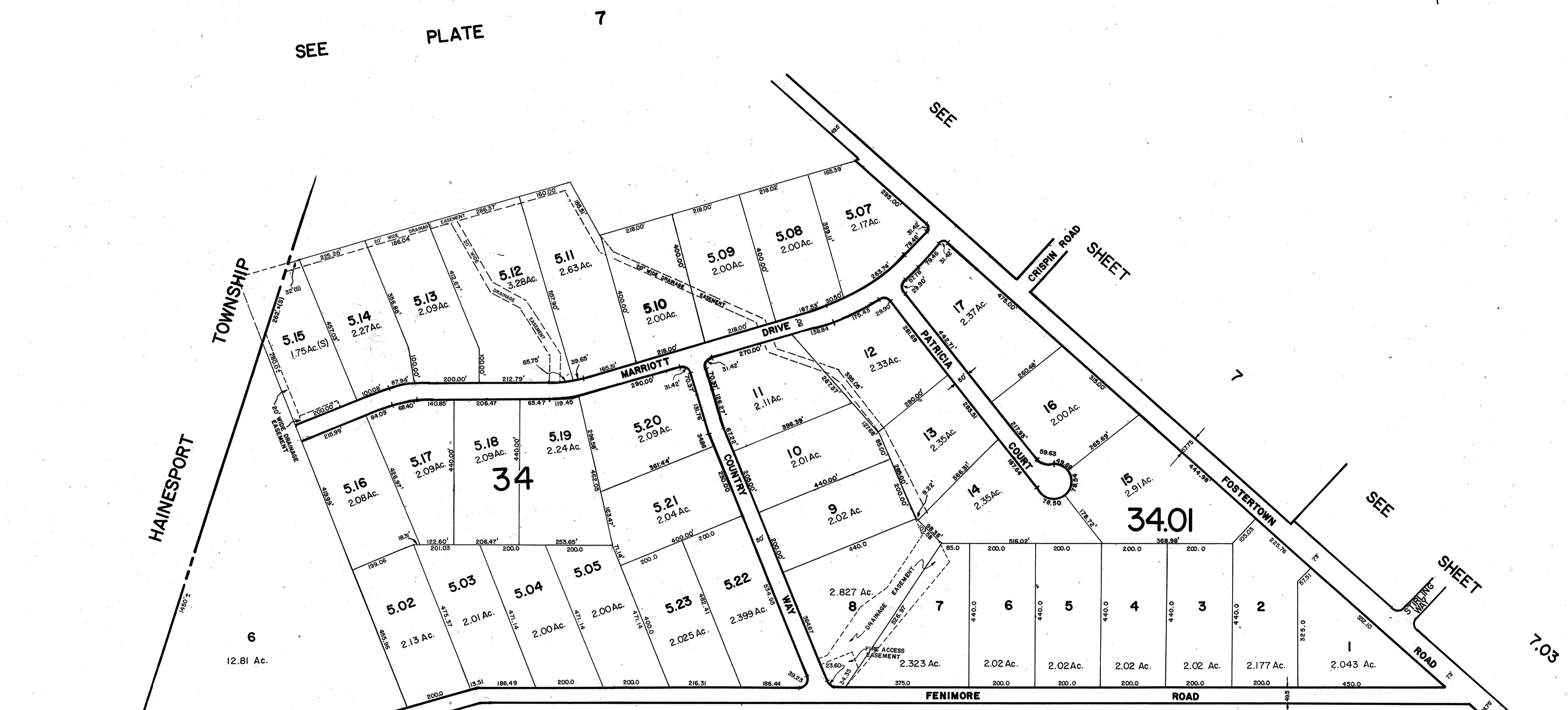
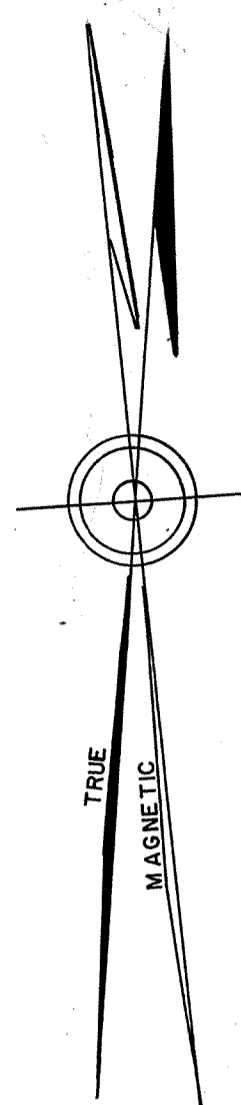


REVISIONS				
REVISED BY:	DATE	REVISION MADE TO:	by	Tr
RICHARD A. ALAIMO ASSO.	7-29-87	ADDED SEC. 2,3,4 BLK. 34 & 34.01 (PLAN)	JRF	94



SEE PLATE 7

SEE

SEE

SEE PLATE 8

TAX MAP
LUMBERTON TOWNSHIP
 BURLINGTON COUNTY N. J.
 SCALE: 1" = 200' NOVEMBER 1986
T. RONALD GSELL
 200 HIGH STREET, MOUNT HOLLY, N. J.