

DATE	NAME OF P.L.S.	LICENSE # OF P.L.S.
10/19/10	PATRICK S. VITARELLI	N.J.P.L.S. #27895

SEE SHEET 7

SEE SHEET 6

SEE SHEET 6

SEE SHEET 9

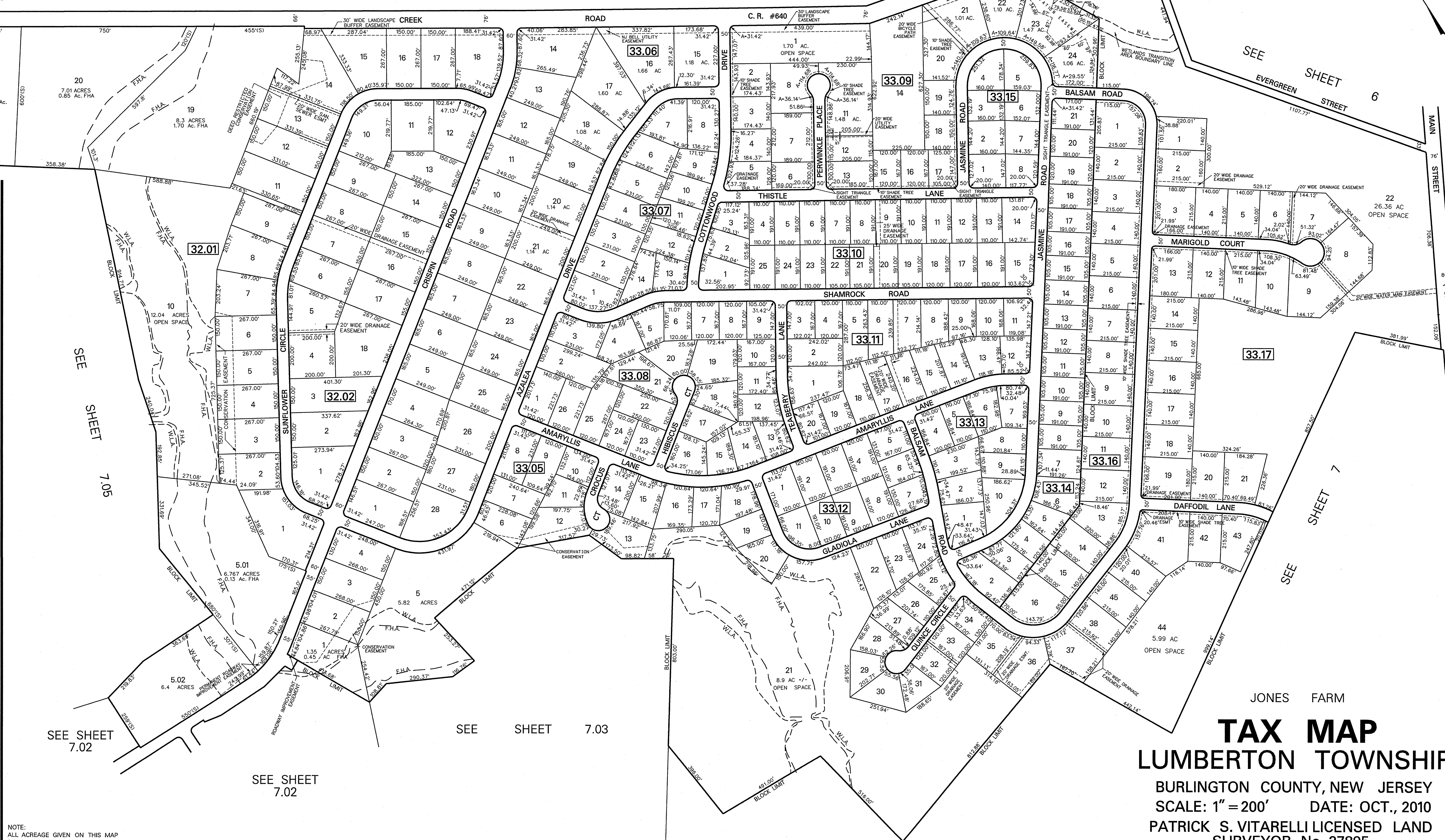
SEE SHEET 7

SEE SHEET 7.02

SEE SHEET 7.02

SEE SHEET 7.03

SEE SHEET 7



NOTE:  
ALL ACREAGE GIVEN ON THIS MAP DOES NOT INCLUDE ROAD AREAS.

NOTE:  
THIS SHEET HAS BEEN REDRAWN USING COMPUTER AIDED DRAFTING/DESIGN (CAD/D) BASED ON THE MAP PREPARED BY: T. RONALD GSELL, PE & PLS, DATED: SEPT. 10, 1998

JONES FARM

# TAX MAP

## LUMBERTON TOWNSHIP

BURLINGTON COUNTY, NEW JERSEY  
 SCALE: 1" = 200' DATE: OCT., 2010  
 PATRICK S. VITARELLI LICENSED LAND SURVEYOR No. 27895  
 ENVIRONMENTAL RESOLUTIONS, INC.  
 525 FELLOWSHIP ROAD, SUITE 300, MT. LAUREL, NJ