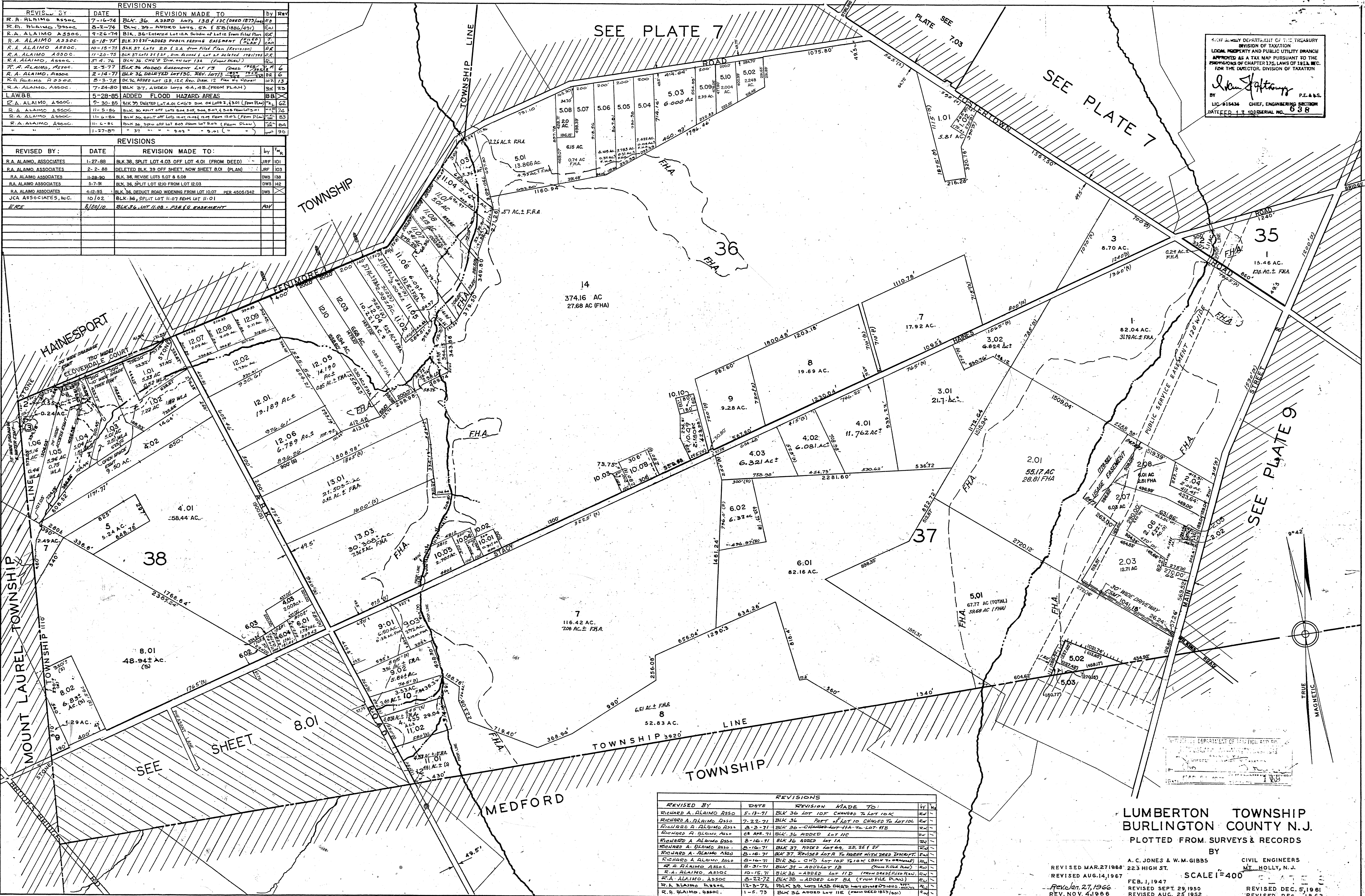


REVISED BY	DATE	REVISION MADE TO	BY	REV
R.A. ALAIMO ASSOC	7-16-74	BLK 36 ADDED LOTS 13B & 13C (FROM 1873)	EW	18
R.A. ALAIMO ASSOC	8-2-74	BLK 36 ADDED LOTS 5A & 5B (1886/491)	EW	19
R.A. ALAIMO ASSOC	9-26-74	BLK 36 ADDED LOTS 12A, 12B, 12C (FROM FILE PLAN)	EW	20
R.A. ALAIMO ASSOC	6-18-75	BLK 36 ADDED PUBLIC SERVICE EASEMENT (PLAN)	EW	21
R.A. ALAIMO ASSOC	10-15-75	BLK 36 ADDED LOT 11D (FROM DEED FILE PLAN)	EW	22
R.A. ALAIMO ASSOC	11-20-75	BLK 36 ADDED LOT 11E (FROM DEED FILE PLAN)	EW	23
R.A. ALAIMO ASSOC	5-4-76	BLK 36 CHG'D DIM. ON LOT 13A (FROM PLAN)	EW	24
R.A. ALAIMO ASSOC	2-3-77	BLK 36 ADDED EASEMENT LOT 13 (PLAN)	EW	25
R.A. ALAIMO ASSOC	2-14-77	BLK 36 DELETED LOT 13C, REV. LOT 13 (PLAN)	EW	26
R.A. ALAIMO ASSOC	5-3-78	BLK 36 ADDED LOT 12B, 12C, REV. DIM. 12 (FROM PLAN)	EW	27
R.A. ALAIMO ASSOC	7-24-80	BLK 36 ADDED LOTS 4A, 4B (FROM PLAN)	EW	28
LAW & B	5-28-85	ADDED FLOOD HAZARD AREAS	BB	29
R.A. ALAIMO ASSOC	7-30-85	BLK 36 ADDED LOTS 1, 2, 3, 4, 5, 6, 7, 8, 9, 10 (FROM PLAN)	EW	30
R.A. ALAIMO ASSOC	11-5-86	BLK 36 SPLIT OFF LOTS 504, 505, 506, 507, 508 FROM LOTS 1-10	EW	31
R.A. ALAIMO ASSOC	11-6-86	BLK 36 SPLIT OFF LOTS 10A, 10B, 10C FROM LOTS 1-10	EW	32
R.A. ALAIMO ASSOC	11-6-86	BLK 36 SPLIT OFF LOT 505 FROM LOT 504 (FROM PLAN)	EW	33
R.A. ALAIMO ASSOC	11-27-87	BLK 36 SPLIT OFF LOTS 10A, 10B, 10C FROM LOTS 1-10	EW	34

REVISED BY	DATE	REVISION MADE TO	BY	REV
R.A. ALAIMO ASSOCIATES	1-27-88	BLK 36 SPLIT LOT 4.03 OFF LOT 4.01 (FROM DEED)	JRF	101
R.A. ALAIMO ASSOCIATES	2-2-88	DELETED BLK 36 OFF SHEET, NOW SHEET 801 (PLAN)	JRF	103
R.A. ALAIMO ASSOCIATES	11-28-90	BLK 36 REVISE LOTS 507 & 508	DWS	108
R.A. ALAIMO ASSOCIATES	5-7-91	BLK 36 SPLIT LOT 12A FROM LOT 12B	DWS	112
R.A. ALAIMO ASSOCIATES	4-12-93	BLK 36 DEDUCT ROAD WIDENING FROM LOT 1007 PER 4505/342	DWS	116
JCA ASSOCIATES, INC.	10-10-92	BLK 36 SPLIT LOT 11-07 FROM LOT 11-01	ASH	119
EGE	8/30/10	BLK 36, LOT 11.08 - CHG. EASEMENT	ASH	120



NEW JERSEY DEPARTMENT OF THE TREASURY
DIVISION OF TAXATION
LOCAL PROPERTY AND PUBLIC UTILITY BRANCH
APPROVED AS A TAX MAP PURSUANT TO THE
PROVISIONS OF CHAPTER 175, LAWS OF 1953, ETC.
FOR THE DIRECTOR, DIVISION OF TAXATION

John J. Hattaway
BY LIC. #18434 CHIEF, ENGINEERING SECTION
DATE FEB. 13, 1966 SERIAL NO. 638

REVISED BY	DATE	REVISION MADE TO	BY	REV
RICHARD A. ALAIMO ASSO	5-13-71	BLK 36 LOT 10F CHANGED TO LOT 10K	EW	1
RICHARD A. ALAIMO ASSO	7-22-71	BLK 36 PART OF LOT 10 CHANGED TO LOT 10L	EW	2
RICHARD A. ALAIMO ASSO	8-2-71	BLK 36 - CHANGED LOT 11A TO LOT 11B	EW	3
RICHARD A. ALAIMO ASSO	8-8-71	BLK 36 ADDED LOT 11C	EW	4
RICHARD A. ALAIMO ASSO	8-16-71	BLK 36 ADDED LOT 1A	EW	5
RICHARD A. ALAIMO ASSO	8-16-71	BLK 36 ADDED LOT 4A, 2D, 2E, 2F	EW	6
RICHARD A. ALAIMO ASSO	8-16-71	BLK 36 ADDED LOTS 7A TO 7D (FROM DEEDS DIRECT)	EW	7
RICHARD A. ALAIMO ASSO	8-16-71	BLK 36 - CHG. LOT 10F TO 10K (FROM DEEDS)	EW	8
R.A. ALAIMO ASSOC	8-31-71	BLK 36 - ADDED LOT 1B (FROM FILE PLAN)	EW	9
R.A. ALAIMO ASSOC	10-15-71	BLK 36 - ADDED LOT 11D (FROM DEEDS FILE PLAN)	EW	10
R.A. ALAIMO ASSOC	8-22-72	BLK 36 - ADDED LOT 8A (FROM FILE PLAN)	EW	11
R.A. ALAIMO ASSOC	11-5-72	BLK 36, LOTS 1A, 2A, 3A, 4A, 5A, 6A, 7A, 8A, 9A, 10A, 11A, 12A	EW	12
R.A. ALAIMO ASSOC	11-5-73	BLK 36 ADDED LOT 11E (FROM DEED 1873/100)	EW	13
R.A. ALAIMO ASSOC	11-5-83	BLK 36, REV'D LOT 10H. (DEED.)	EW	44
R.A. ALAIMO ASSOC	12-12-83	BLK 36, ADDED LOT 4A (FROM PLAN)	EW	45
R.A. ALAIMO ASSOC	12-12-83	BLK 36, ADDED LOTS 5A, 5B (FROM PLAN)	EW	46
L.A.W. & B.	1-3-85	REV. TO N.J. TAX MAP STANDARDS	FC	54
L.A.W. & B.	1-3-85	REV. TO N.J. TAX MAP STANDARDS	FC	55
L.A.W. & B.	1-3-85	REV. TO N.J. TAX MAP STANDARDS	FC	56

LUMBERTON TOWNSHIP
BURLINGTON COUNTY N.J.
PLOTTED FROM SURVEYS & RECORDS

BY A.C. JONES & W.M. GIBBS
223 HIGH ST.
MT. HOLLY, N.J.

REVISED MAR. 27, 1968
REVISED AUG. 14, 1967
REV. JAN. 27, 1966
REV. NOV. 4, 1966

FEB. 1, 1947
REVISED SEPT. 29, 1950
REVISED AUG. 25, 1952

REVISED OCT. 19, 1953
REVISED JUNE 10, 1955
REVISED JAN. 1958

SCALE 1"=400'

REVISED DEC. 5, 1961
REVISED DEC. 1962
REVISED APR. 3, 1963
REVISED SEPT. 25, 1964
REVISED NOV. 17, 1965
REVISED JAN. 6, 1971