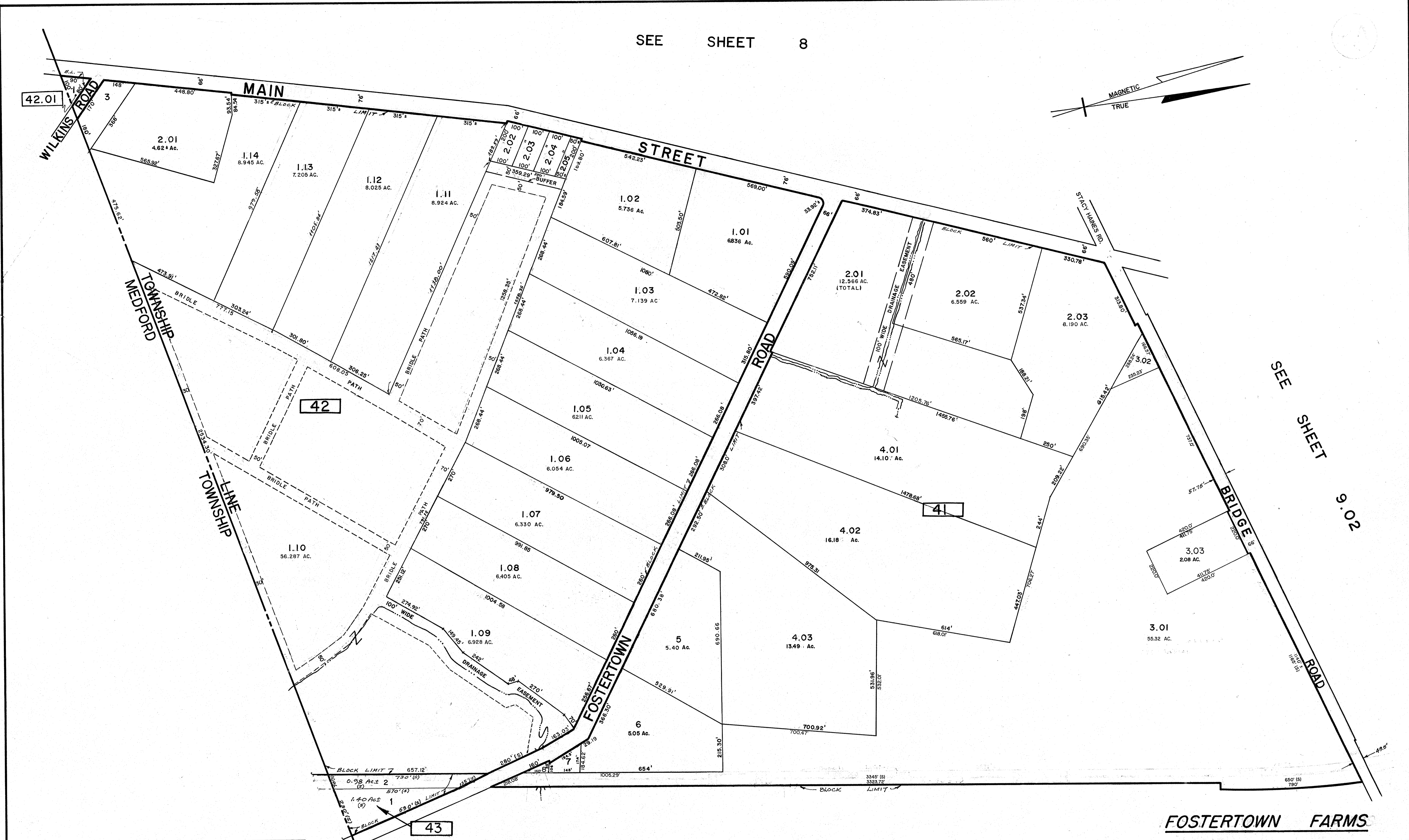
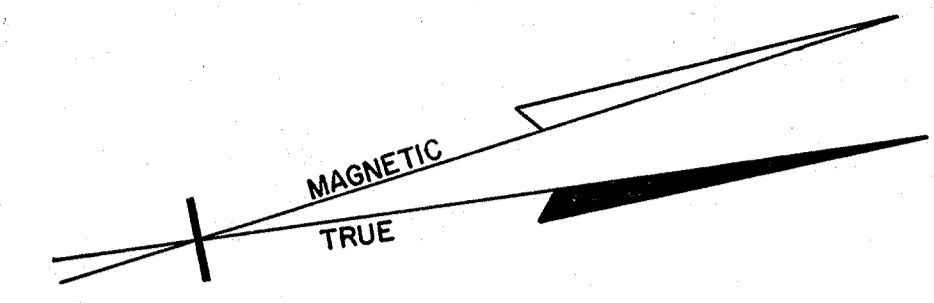


SEE SHEET 8



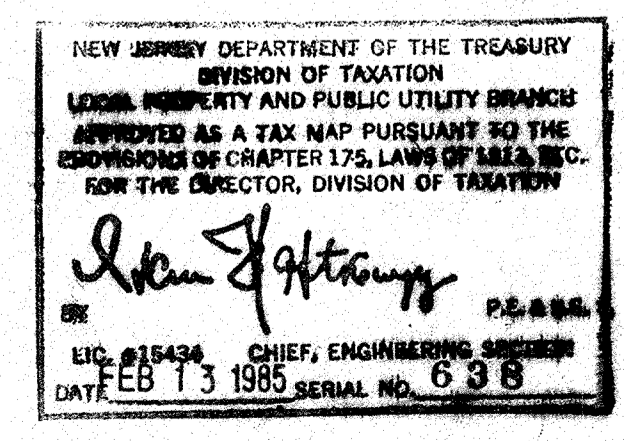
SEE SHEET 9.02

FOSTERTOWN FARMS

TAX MAP
LUMBERTON TOWNSHIP
BURLINGTON COUNTY, N.J.

RICHARD A. ALAIMO ASSOCIATES
CONSULTING ENGINEERS
200 HIGH STREET, MOUNT HOLLY, N.J.

MAY 1976 SCALE 1" = 200'



SEE SHEET 9

| REVISIONS | | | |
|------------------------|----------|--|-----|
| REVISED BY: | DATE | REVISION MADE TO: | by |
| R.A. ALAIMO, ASSOC. | 6-11-76 | BLK 42 COMBINED LOTS 2, 4, & 4B FROM PLAN | ibm |
| | | BLK 42 ADDED LOTS 1A, 1B, 1C FROM PLAN | ibm |
| R.A. ALAIMO, ASSOC. | 6-25-76 | BLK 42, REVISED LOT 1K (PLAN) | ibm |
| R.A. ALAIMO, ASSOC. | 10-13-76 | BLK 42, MADE REVISIONS REGARDING TOWNSHIP LINE | ibm |
| R.A. ALAIMO, ASSOC. | 10-20-76 | REVISIONS TO ACRE SIZES ON VARIOUS LOTS | ibm |
| L.A.W. & B. | 9-25-84 | REV. TO N.J. TAX MAP STANDARDS | LL |
| L.A.W. & B. | 1-3-85 | REV. TO N.J. TAX MAP STANDARDS | LL |
| L.A.W. & B. | 1-31-85 | REV. TO N.J. TAX MAP STANDARDS | LL |
| R.A. ALAIMO ASSOCIATES | 10-12-93 | BLK. 41, SPLIT LOT 3.03 FROM LOT 3.01 | ibm |