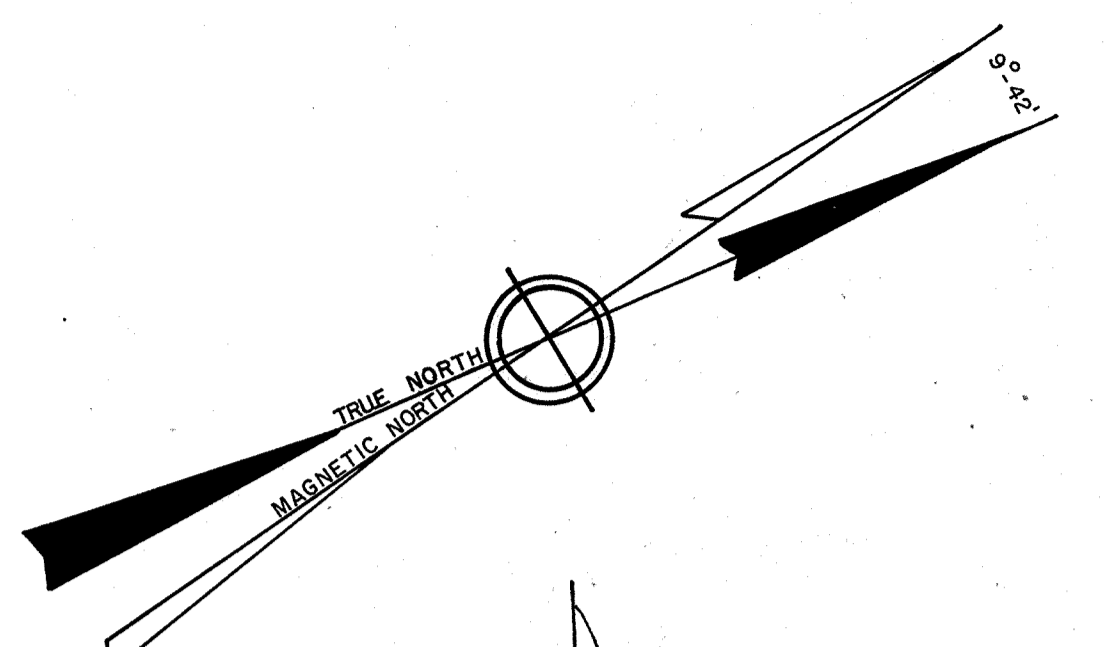
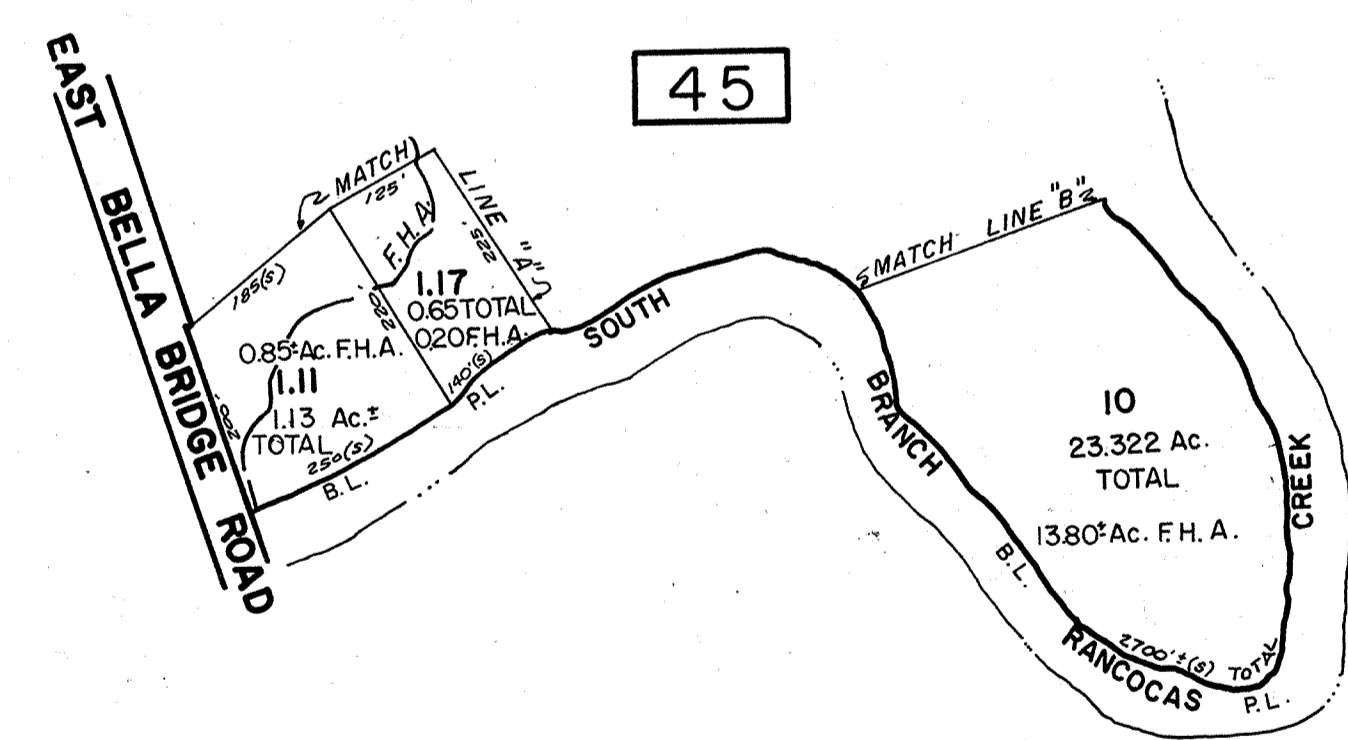


SEE SHEET 7



SEE SHEET 6



REVISED BY:	DATE	REVISIONS	BY	TMR
L. A. W. & B.	9-26-84	REV. TO N.J. TAX MAP STANDARDS	LL	
L. A. W. & B.	1-3-85	REV. TO N.J. TAX MAP STANDARDS	LL	
RICHARD A. ALAIMO ASSOC.	4-10-86	ADDED BLOCK 48 FROM SHEET 9 (FROM ASSOCIATES)	LL	70
RICHARD A. ALAIMO ASSOC.	4-10-86	BLK 44 ADDED LOTS 2 THRU 8 (FROM PLAN)	LL	71
RICHARD A. ALAIMO ASSOC.	4-10-86	BLK 40 ADDED LOTS 27 THRU 34 (FROM PLAN)	LL	72
RICHARD A. ALAIMO ASSOC.	4-10-86	BLK 45 ADDED NEW LOTS (FROM PLAN)	LL	73
RICHARD A. ALAIMO ASSOC.	8-10-90	BLK 40 LOTS 16 & 17 ADDED ACCESS EASEMENT (DEED)	JAC	131
R. A. ALAIMO ASSOCIATES	11-12-91	BLK 45, DELETE LOTS 120 & 121, REDIVIDE LOTS 104, 105 & 118	DWS	145

NEW JERSEY DEPARTMENT OF THE TREASURY  
 LOCAL PROPERTY AND PUBLIC UTILITY BRANCH  
 APPROVED AS A TAX MAP PURSUANT TO THE  
 PROVISIONS OF CHAPTER 175, LAWS OF 1983, REC.  
 FOR THE DIRECTOR, DIVISION OF TAXATION

*John J. Johnson*  
 P.E. & S.S.  
 LIC. 011430 CHIEF, ENGINEERING SECTION  
 DATE FEB 13 1989 SERIAL NO. 638

**TAX MAP**  
**LUMBERTON TOWNSHIP**  
**BURLINGTON COUNTY, N.J.**

RICHARD A. ALAIMO ASSOCIATES  
 CONSULTING ENGINEERS  
 200 HIGH STREET, MOUNT HOLLY, N.J.

DECEMBER 1983 SCALE: 1" = 200'