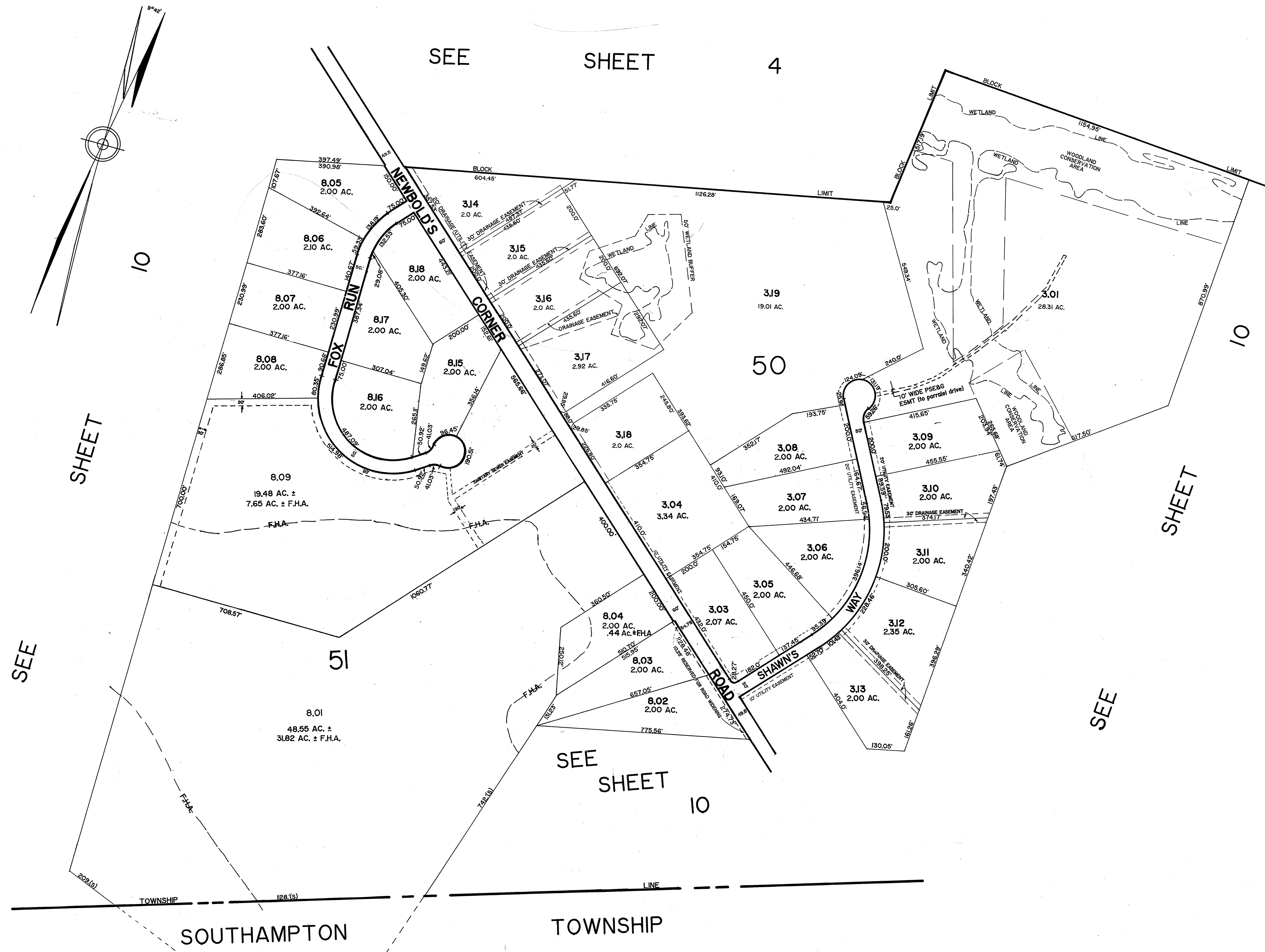


REVISIONS			
REVISED BY:	DATE	REVISION MADE TO:	by T _{MR}
RICHARD A. ALAIMO, ASSOC.	3-20-89	BLK. 51, SPLIT LOT 8.09 FROM LOT 8.01 (PLAN)	RJF, III
RICHARD A. ALAIMO, ASSOC.	9-25-89	ADD P/O BLK. 50	DWS, IIB
RICHARD A. ALAIMO, ASSOC.	4-12-90	BLK. 50 ADDED UTILITY EASEMENT (PLAN)	JAC, I27
R.A. ALAIMO ASSOCIATES	2-4-92	BLK. 50, ADD LOTS 314 THROUGH 319	DWS, I46



TAX MAP
 LUMBERTON TOWNSHIP
 BURLINGTON COUNTY, N.J.
 T. RONALD GSELL
 LICENSED LAND SURVEYOR
 N.J. LICENSE NO. 12812
 200 HIGH STREET, MOUNT HOLLY, N.J.
 JANUARY 1988 SCALE 1" = 200'